



## 4.3 IT Infrastructure

### 4.3.1 IT FACILITIES

---

ST.MARY'S COLLEGE  
SULTHAN BATHERY,  
WAYANAD, KERALA-673592

## IT FACILITIES

SL	FACILITY
1	Upgradation Table (IT)
2	ICT Enabled Classrooms & Seminar Halls
3	Computer Labs
4	Digital Learning Repository
5	Academic/Administration Support Software (NECTTOs)
6	NECTTOs App Parent Login
7	LMS Moodle
8	Digital Library/Inflibnet
9	LED Smart TVs
10	Automated Public Announcement System
11	Reprographic Facility
12	Social Media Platforms
13	Institutional Website
14	G Suite Account
15	Network Switches
16	Routers And Modems
17	Internet Connectivity

## IT UPGRADATION TABLE

Item	During Illrd Accreditation Cycle	Upgradation During Current Accreditation Cycle
Academic/Administrative Software	System Based College Management System(CMS)	Web Based and Mobile Based NECTTOs App
ICT Enabled Classrooms	25	35
Cctv surveillance	NIL	24x7 CCTV Surveillance with 123 Cameras
Projectors	25	21
Smart tvs	0	14
DST/FST	NIL	Dedicated DST/FIST Laboratory
LMS	NIL	LMS Moodle By DIGICOL
UPS	7	10
Internet Connections	1	3
Printers/Scanners	27	31
Social Media	1	3
Server	1	3

## ICT ENABLED CLASSROOMS AND SEMINAR HALLS



Click Here to View Supporting Documents

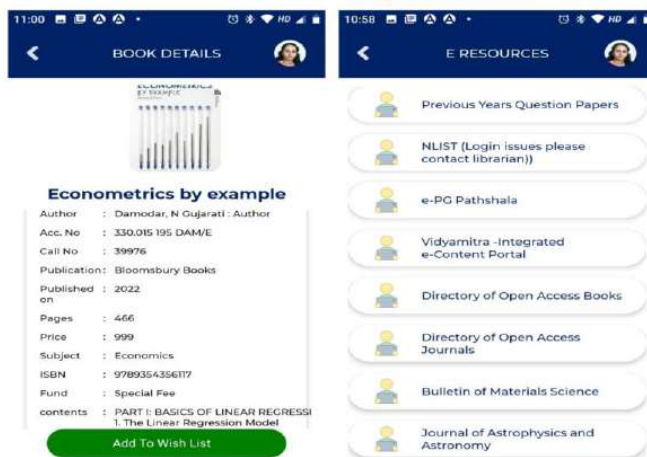
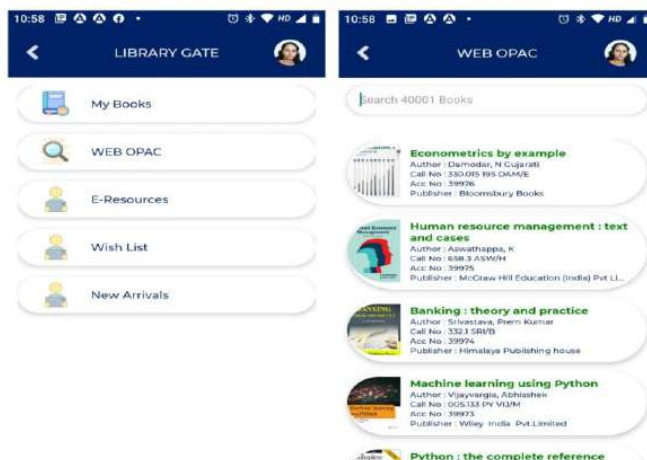
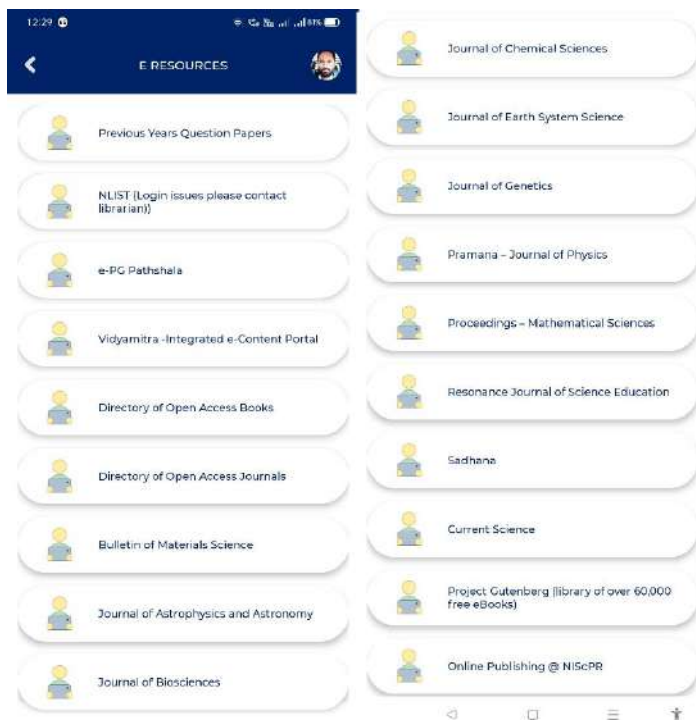
1. [ICT Enabled Classrooms](#)
2. [ICT Enabled Seminar Halls](#)

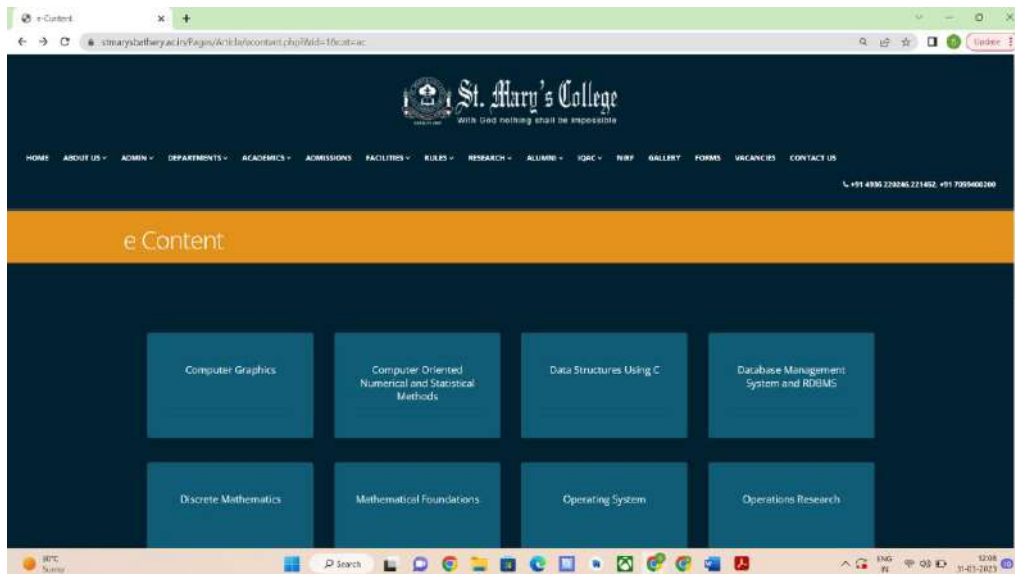
## COMPUTER LABORATORIES



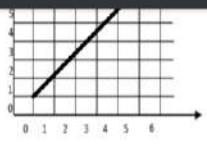
[Click Here to View Supporting Documents](#)

# DIGITAL LEARNING REPOSITORIES





2902022-03042SecDDA.pdf



Computer Graphics by AJ 4

## Graphics Primitives

- Line Drawing algorithms
  - DDA
  - Bresenham's Line drawing Algorithm

Circle Generating Algorithms

PowerPoint Presentation

PLANT TISSUE CULTURE (PART 1)

BS: ROTARY  
CORE COURSE CODE: ROT300T  
SEM V

By Dr. SURESH  
DEPARTMENT OF BOTANY  
ST. MARY'S COLLEGE, BETHLEHEM

1. Plant tissue culture – Principles and techniques, Cellular totipotency, In vitro differentiation – de-differentiation and re-differentiation; (2 hrs)

2. Tissue culture medium – Basic components in tissue culture medium – Solid and liquid medium; Murashige and Skoog medium – composition and preparation

3. Aseptic techniques in in vitro culture – sterilization – different methods – sterilization of instruments and glassware, medium, explants; working principle of laminar air flow and autoclave; (2 hrs)

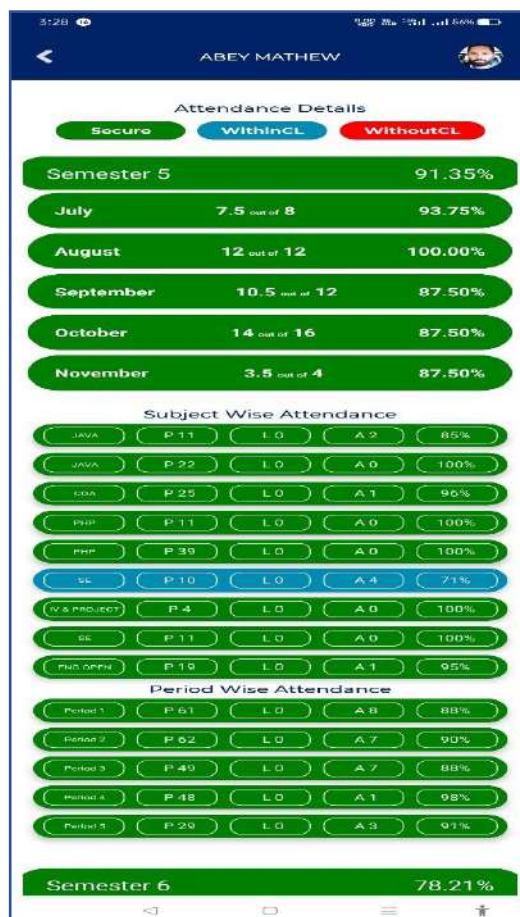
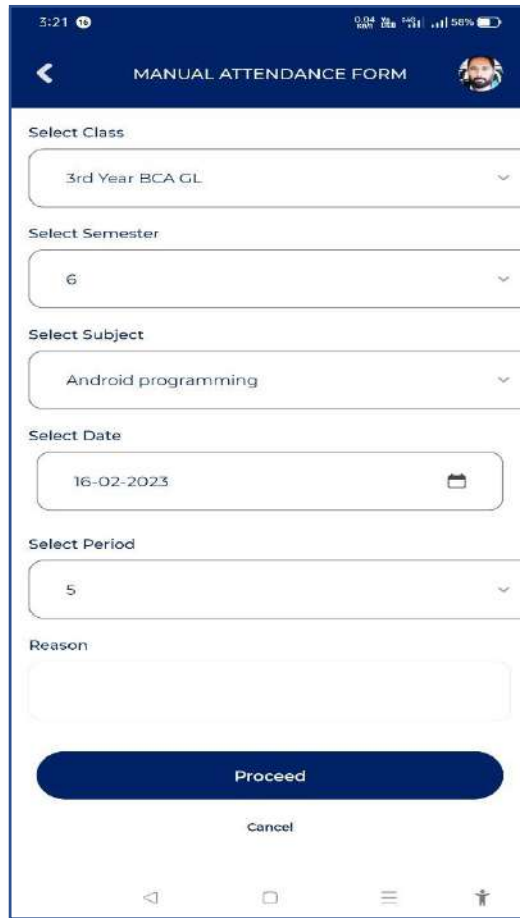
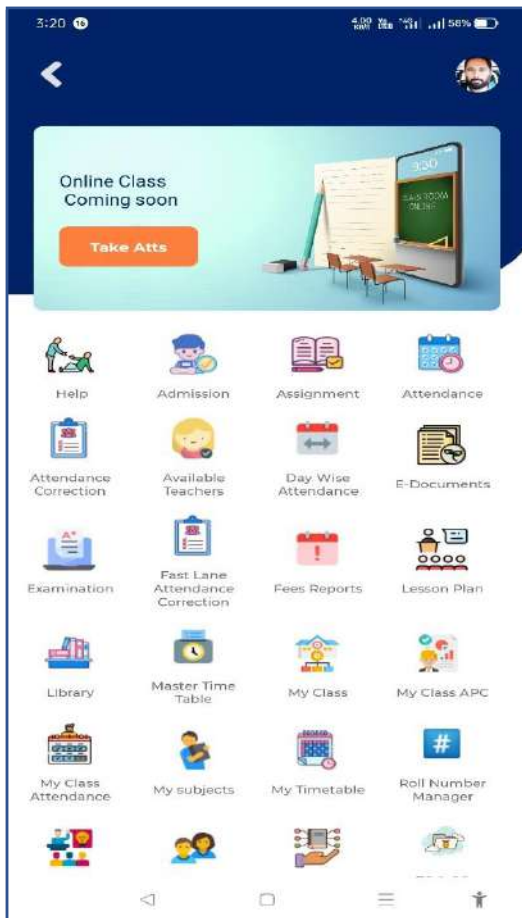
4. Preparation of explants – surface sterilization, inoculation, incubation, subculturing; (2 hrs)

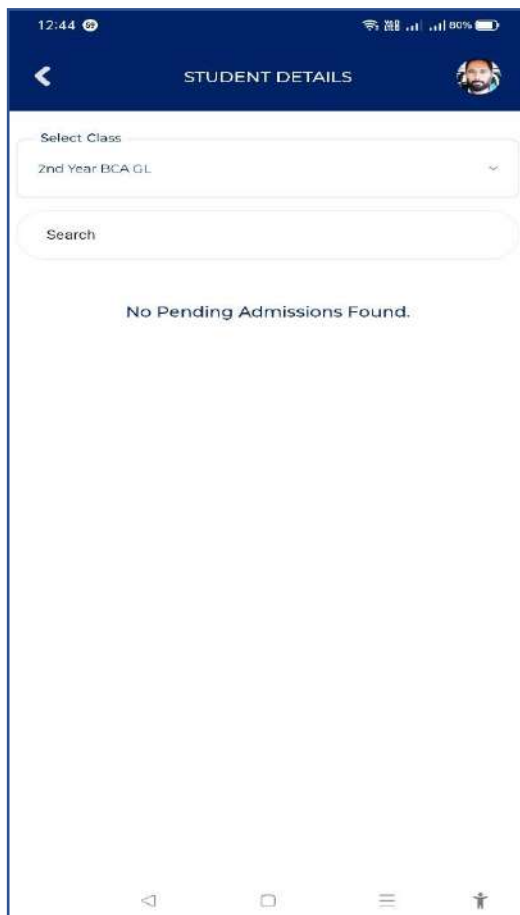
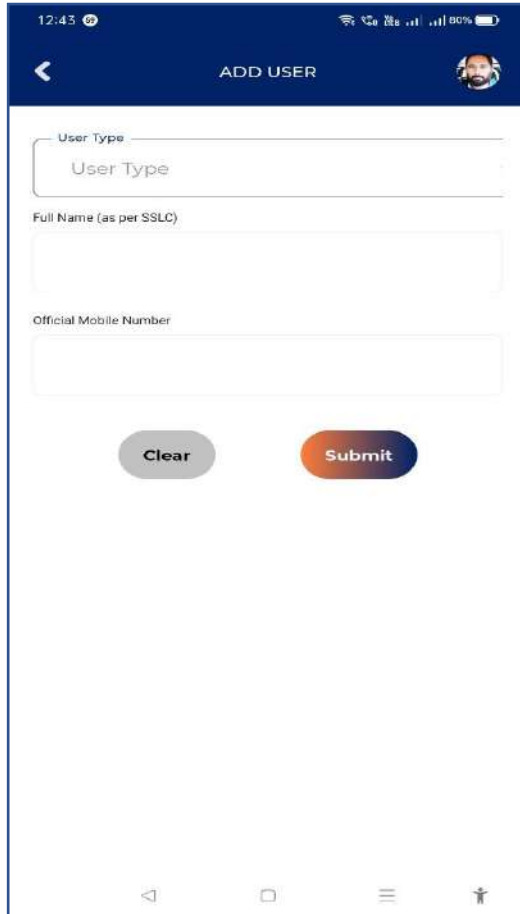
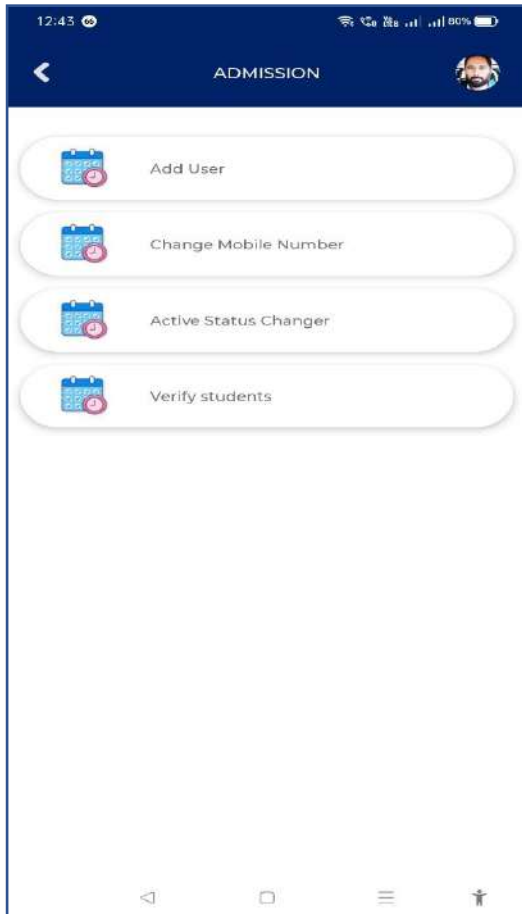
5. Micropropagation – Different methods – apical, axillary bud proliferation, direct and indirect organogenesis and somatic embryogenesis; (2 hrs)

6. Different phases of micropropagation – multiple shoot induction, shoot elongation, in vitro and in vivo rooting, hardening, transplantation and field evaluation; advantages and disadvantages of micropropagation, somaclonal variation; (2 hrs)

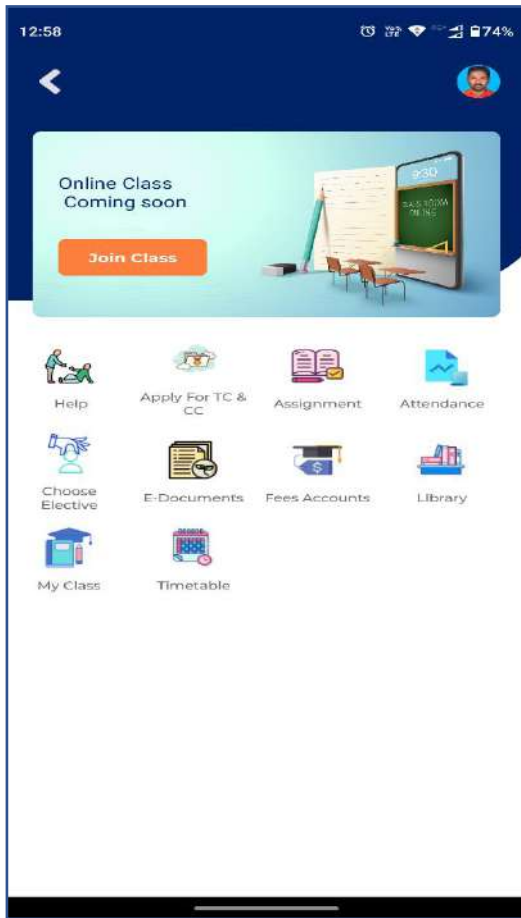


# ACADEMIC/ADMINISTRATION SUPPORT SOFTWARE (NECTTOS)






# NECTTOS APP PARENT LOGIN



# LMS MOODLE

02/07/2022, 3:05 PM St. Mary's College, Sultanbalayan



[Home](#)
[Courses](#)
[News](#)
[Activities](#)
[Help & Contact](#)

Available courses

- [Human Resource Management](#)
- [Genetic and Plant Breeding](#)
- [Public Economics](#)

By the end of the course, students are expected to:



ESTD. IN 1965

Username:

Password:

Remember username

Forgotten your username or password?

Cookies must be enabled in your browser

02/07/2022, 2:48 PM St. Mary's College, Sultanbalayan

Home / My courses / CDS / Statistical Methods I / Online Internal Examination track

10 - Sampling - From the Class Listing

11 - Software Review and Quality Assurance

12 - Statistical Inference

13 - Statistical Regression

14 - Sam.BCA - Computer Graphics

15 - Sam.BCA - Proprietary Laboratory II, Data Structures and OS/MS-DOS

16 - Sam.BCA - Database Management and System

17 - Public Economics

02/07/2022, 3:07 PM Online Internal Examination (track) Attempt Review

Home / My courses / CDS / Statistical Methods I / Online Internal Examination track

Info Dashboard

Started on	Tuesday, 26 July 2022, 10:01 AM
Status	Finished
Completed on	Tuesday, 26 July 2022, 10:57 AM
Time taken	55 mins, 47 secs
Grade	84.00 out of 93.00 (90%)
Feedback	Congratulations

Question 1

Marked out of 3.00

Select the best choice that matches from the dropdown menu:

10%	percentage	✓
100	percentage	✓
100%	percentage of observations	✓

What answer is correct? The correct answer is: 100% = percentage

# DIGITAL LIBRARY/INFLIBNET

The screenshot shows the N-LIST website's user login interface. The browser address bar displays the URL: `nlist.inflibnet.ac.in/idp/profile/SAML2/Redirect/SSO?execution=e1s1`. The website header includes the N-LIST logo and navigation links: College Admin Login, Licences and Foruse, FAQs, Downloads, Awareness Programmes, HOME, ABOUT, MEMBERS, REGISTER, E-RESOURCES, and SEARCH. The main heading reads "MEMBER USER LOGIN TO GET FULLTEXT ACCESS". Below this is a "User Login" form with fields for Username and Password, a "Don't Remember Login" checkbox, and a checkbox for "Clear prior granting of permission for release of your information to this service." A "Login" button is present, along with links for "Forgot password?" and "Activate User / Change password?". The Windows taskbar at the bottom shows the date as 08-04-2023 and the time as 14:55.

The screenshot shows the N-LIST website's member user consent page. The browser address bar displays the URL: `nlist.inflibnet.ac.in/idp/profile/SAML2/Redirect/SSO?execution=e2s2`. The website header is identical to the previous screenshot. The main heading reads "MEMBER USER CONSENT". Below the heading is a section titled "Member User Consent" with a progress indicator. The text states: "You are about to access the service: nlist.inflibnet.ac.in". A table titled "Information to be provided to Service" contains the following data:

Information to be provided to Service	
eduPersonEntitlement	http://nlist.inflibnet.ac.in/general
eduPersonScopedAffiliation	member@nlist.inflibnet.ac.in
uid	library2@gmail.com

Below the table, the text asks: "The information above would be shared with the service if you proceed. Do you agree to release this information to the service every time you access it?". The Windows taskbar at the bottom shows the date as 08-04-2023 and the time as 13:00.

N-LIST: National Library and Information Services Infrastructure for Scholarly Content

standing access to e-Resources to colleges in India

College Admin Login | Licences and Fair Use | FAQs | Downloads | Awareness Programme

HOME ABOUT MEMBERS REGISTER E-RESOURCES SEARCH

## SUBSCRIBED E-RESOURCES

Home | E-Resources

### E-Resources @N-LIST

Request an Article | Logout

Subscribed e-Journals and e-Books

The Consortium subscribes to the following resources for the colleges. All electronic resources subscribed under N-LIST Programme are available from the publisher's website.

You may search e-Books or e-Journals  All Fields

E-Journals (Fulltext)	E-Books
<ul style="list-style-type: none"> <li>American Institute of Physics [18 titles]</li> <li>Annual Reviews [33 titles]</li> <li>Economic and Political Weekly (EPW) [1 title] <a href="#">Alternate Link</a></li> </ul>	<ul style="list-style-type: none"> <li>Cambridge Books Online [1800 titles]</li> <li>E-brary [185000+ titles]</li> <li>EBSCOHost-Net Library [936 titles]</li> </ul>

25°C Mostly sunny 13/01 01-04-2023

10:58 LIBRARY GATE

- My Books
- WEB OPAC
- E-Resources
- Wish List
- New Arrivals

10:58 WEB OPAC

Search 40001 Books

- Econometrics by example**  
 Author : Damodar, N Gujarati  
 Call No : 330.015 195 DAM/E  
 Acc No : 39976  
 Publisher : Bloomsbury Books
- Human resource management : text and cases**  
 Author : Aswathappa, K  
 Call No : 638.3 ASW/H  
 Acc No : 39975  
 Publisher : McGraw Hill Education (India) Pvt L...
- Banking : theory and practice**  
 Author : Silvastava, Prem Kumar  
 Call No : 332 J SRVB  
 Acc No : 39974  
 Publisher : Himalaya Publishing house
- Machine learning using Python**  
 Author : Vijayargis, Abhishek  
 Call No : 005.133 PV VJ/M  
 Acc No : 39973  
 Publisher : Wiley India Pvt.Limited
- Python : the complete reference**

11:00 BOOK DETAILS

**Econometrics by example**

Author : Damodar, N Gujarati : Author  
 Acc. No : 330.015 195 DAM/E  
 Call No : 39976  
 Publication: Bloomsbury Books  
 Published : 2022 on  
 Pages : 466  
 Price : 999  
 Subject : Economics  
 ISBN : 9789364356117  
 Fund : Special Fee  
 contents : PART I: BASICS OF LINEAR REGRESSI  
 1.The Linear Regression Model

10:58 E RESOURCES

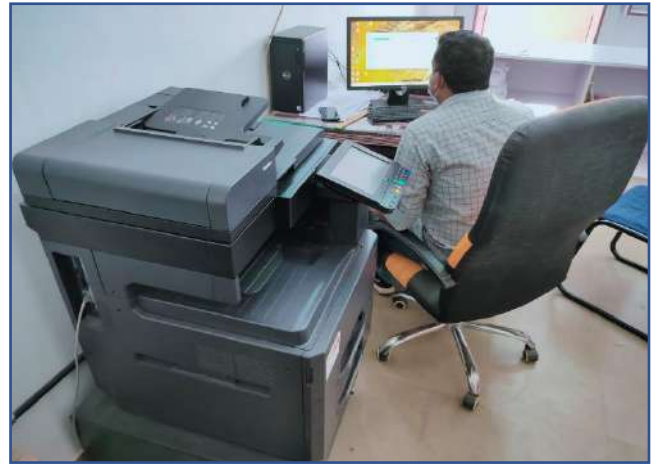
- Previous Years Question Papers
- NLIST (Login issues please contact librarian))
- e-PG Pathshala
- Vidyamitra - Integrated e-Content Portal
- Directory of Open Access Books
- Directory of Open Access Journals
- Bulletin of Materials Science
- Journal of Astrophysics and Astronomy

## LED SMART TVS



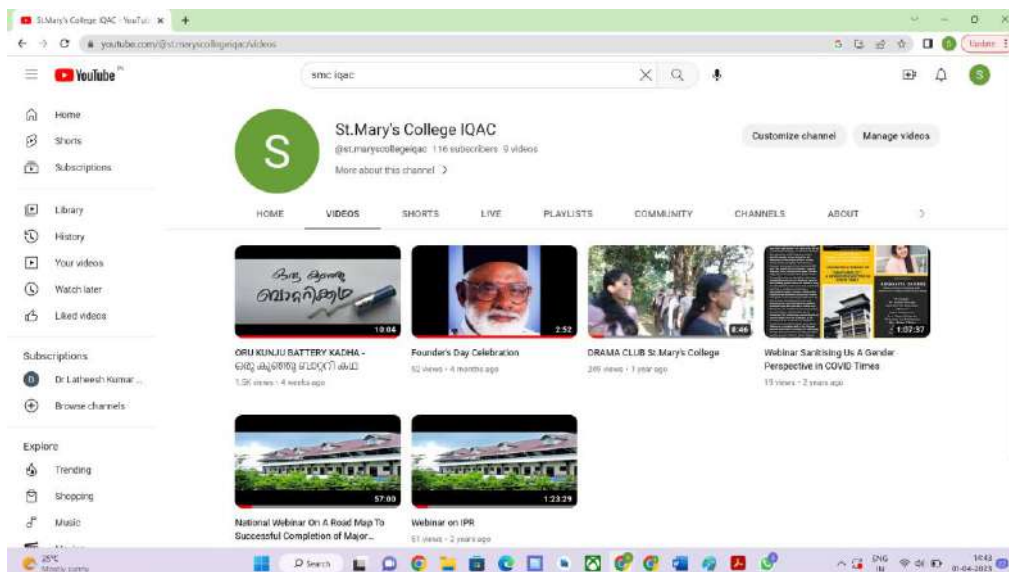
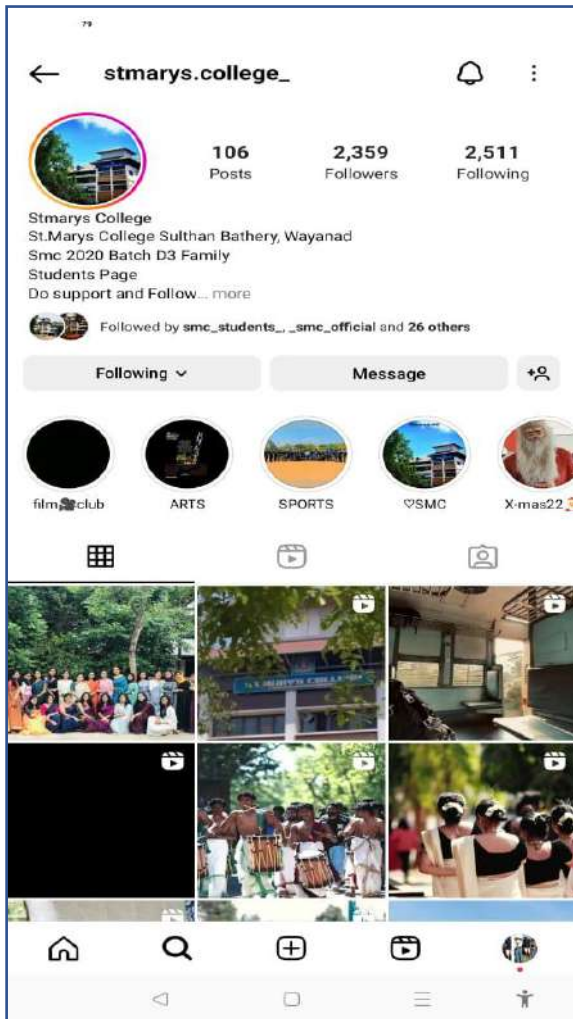
[Click Here to View Supporting Documents](#)

## REPROGRAPHIC FACILITY

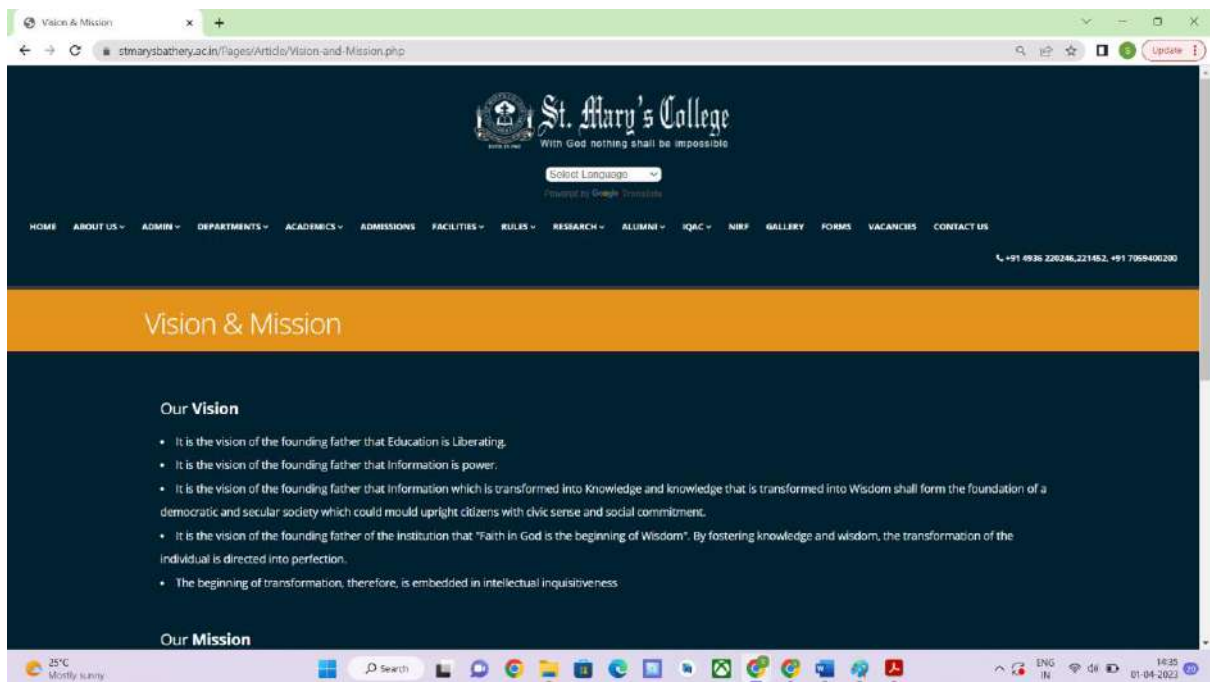
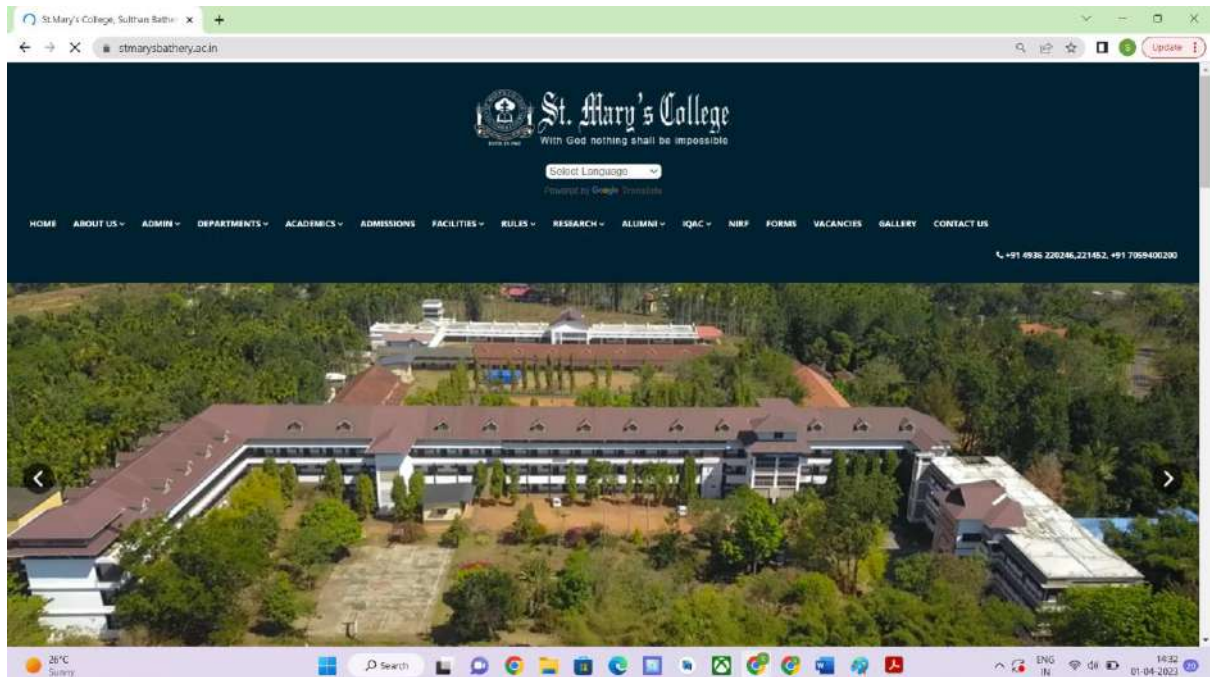




# SOCIAL MEDIA PLATFORMS

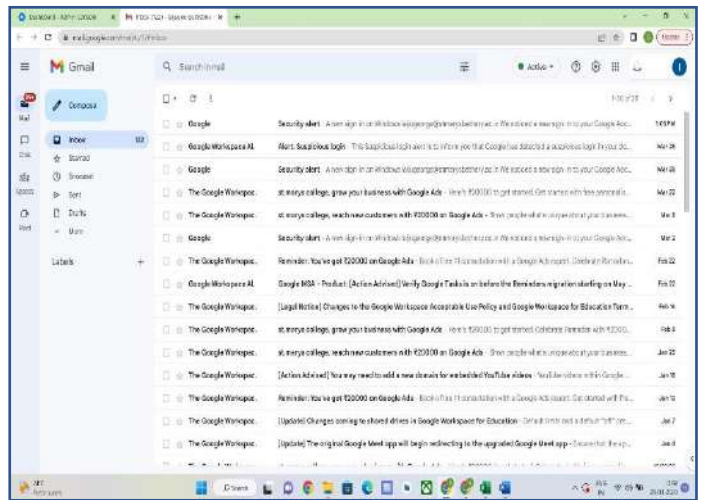
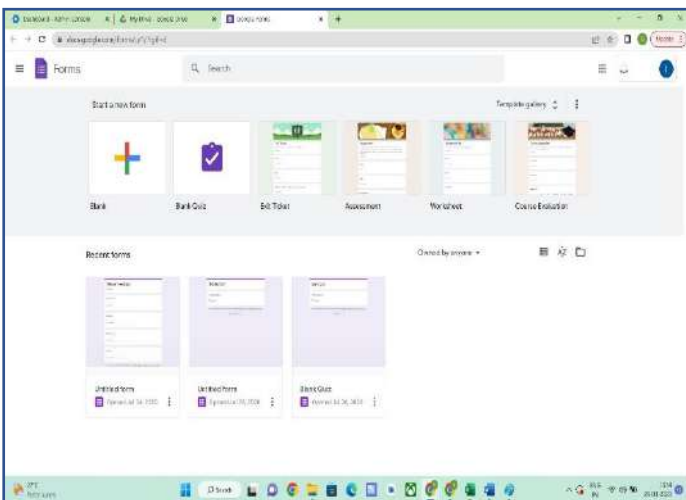
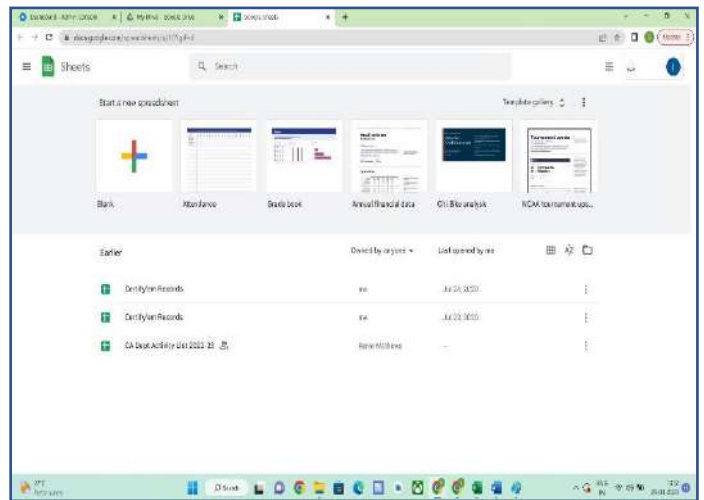
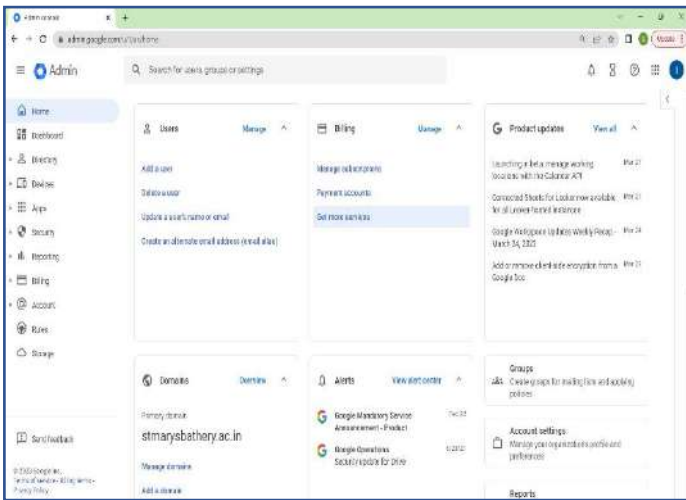


# INSTITUTIONAL WEBSITE

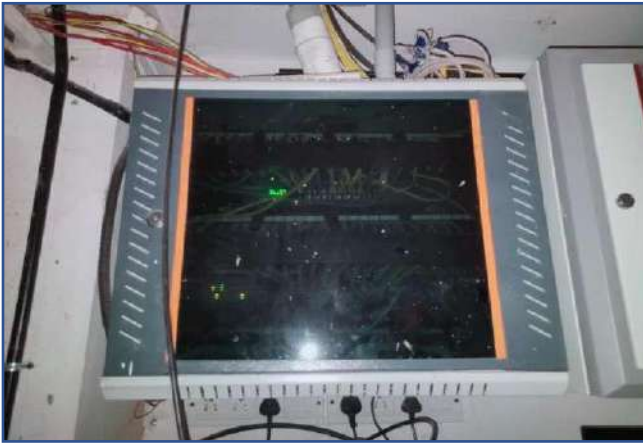


[Click Here to View Supporting Documents](#)

# G SUITE ACCOUNT



## NETWORK SWITCHES



[Click Here to View Supporting Documents](#)

## ROUTERS AND MODEMS



[Click Here to View Supporting Documents](#)

# INTERNET CONNECTIVITY

SL NO	SERVICE ID	STRENGTH	TYPE
1	fh4936298247_sid	Speed Upto 100Mbps till 3300GB beyond that Upto 10Mbps	BSNL Fibre Values Plus
2	fh4936298248_sid	Speed Upto 100Mbps till 3300GB beyond that Upto 10Mbps	BSNL Fibre Values Plus
3	fh4936298246_sid	Speed Upto 100Mbps till 3300GB beyond that Upto 10Mbps	BSNL Fibre Values Plus

